

An aerial photograph of a residential neighborhood in Huntington, West Virginia, showing significant flooding. The water is a muddy brown color and has inundated many streets and yards. In the background, there are green hills and a large building complex. A semi-transparent white text box is overlaid on the center of the image.


# Planning and Floodplain Management

Presented by:

Patricia Usher

City of Huntington, WV

*Planning Associate / Floodplain Administrator*

An aerial photograph showing a residential neighborhood in Southside after a major flood. The water is a muddy brown color and has inundated most of the area, surrounding houses and trees. A large red brick church with a white steeple is prominent on the right side. A multi-lane highway runs through the center-left of the image. In the background, there are green hills and some larger buildings. The sky is overcast.

Enslow Park and Southside  
Neighborhoods after the  
May 6<sup>th</sup> 2022 Flood

# Objectives of the Professions

## Floodplain Management

The mission of the West Virginia Emergency Management Division (WVEMD) is to ensure the protection of life and property by providing coordination, guidance, support and assistance to local emergency managers and first responders.

-WV Emergency Management Division

## Planning

The goal of planning is to maximize the health, safety, and economic well-being of all people living in our communities. This involves thinking about how we can move around our communities, how we can attract and retain thriving businesses, where we want to live, and opportunities for recreation. Planning helps create communities of lasting value.

-American Planning Association

# Do You See the Similarities?

## Floodplain Management


The mission of the West Virginia Emergency Management Division (WVEMD) is to **ensure the protection of life and property** by providing coordination, guidance, support and assistance to local emergency managers and first responders.

-WV Emergency Management Division

## Planning

The goal of planning is to **maximize the health, safety, and economic well-being of all people living in our communities**. This involves thinking about how we can move around our communities, how we can attract and retain thriving businesses, where we want to live, and opportunities for recreation. Planning helps create communities of lasting value.

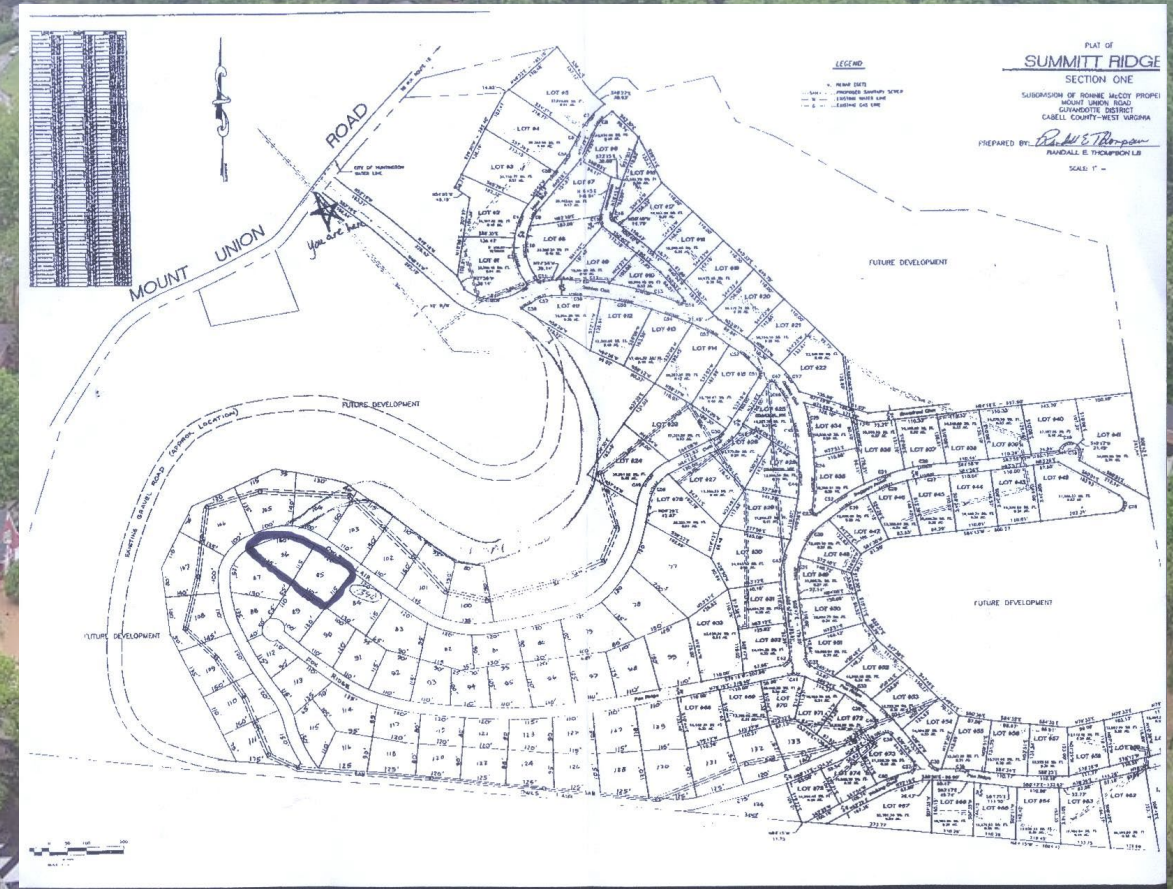
-American Planning Association

An aerial photograph showing a residential neighborhood that has been severely flooded. The water is a muddy brown color and has inundated the streets and yards between houses. In the background, there are green hills and a multi-lane road. A semi-transparent grey box is overlaid on the center of the image, containing text.

Floodplain management should be more than just responding to an event; effective management requires planning to reduce/eliminate the loss of life and property before the event happens.

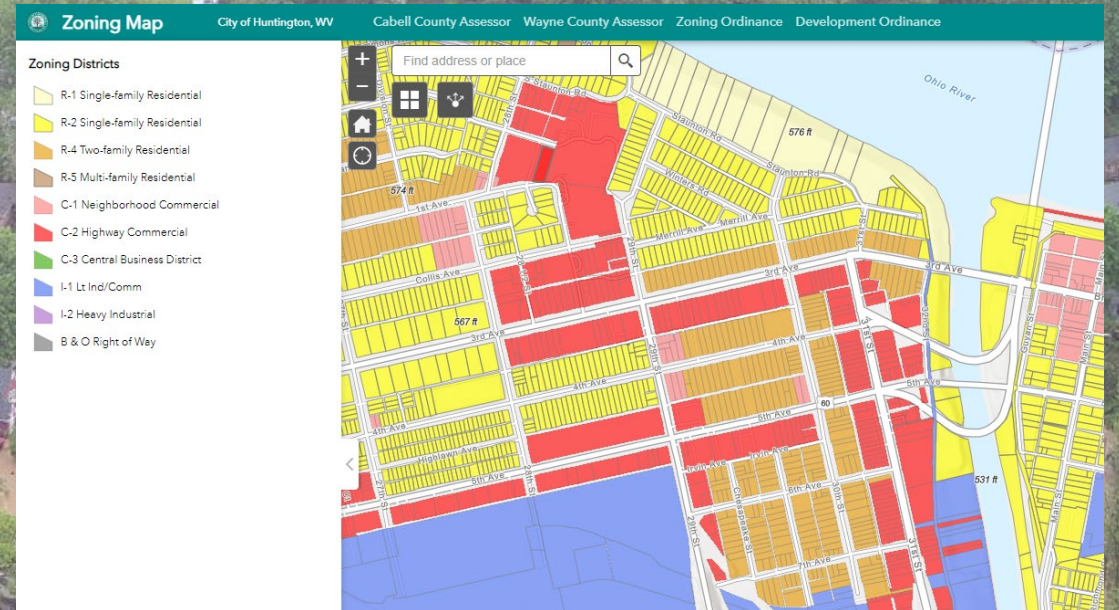
# Subdivision Ordinance

- Division and merging of tracts of land
- Roads and right-of-ways
- Drainage and stormwater management
- Water and sewer facilities
- Residential and nonresidential development

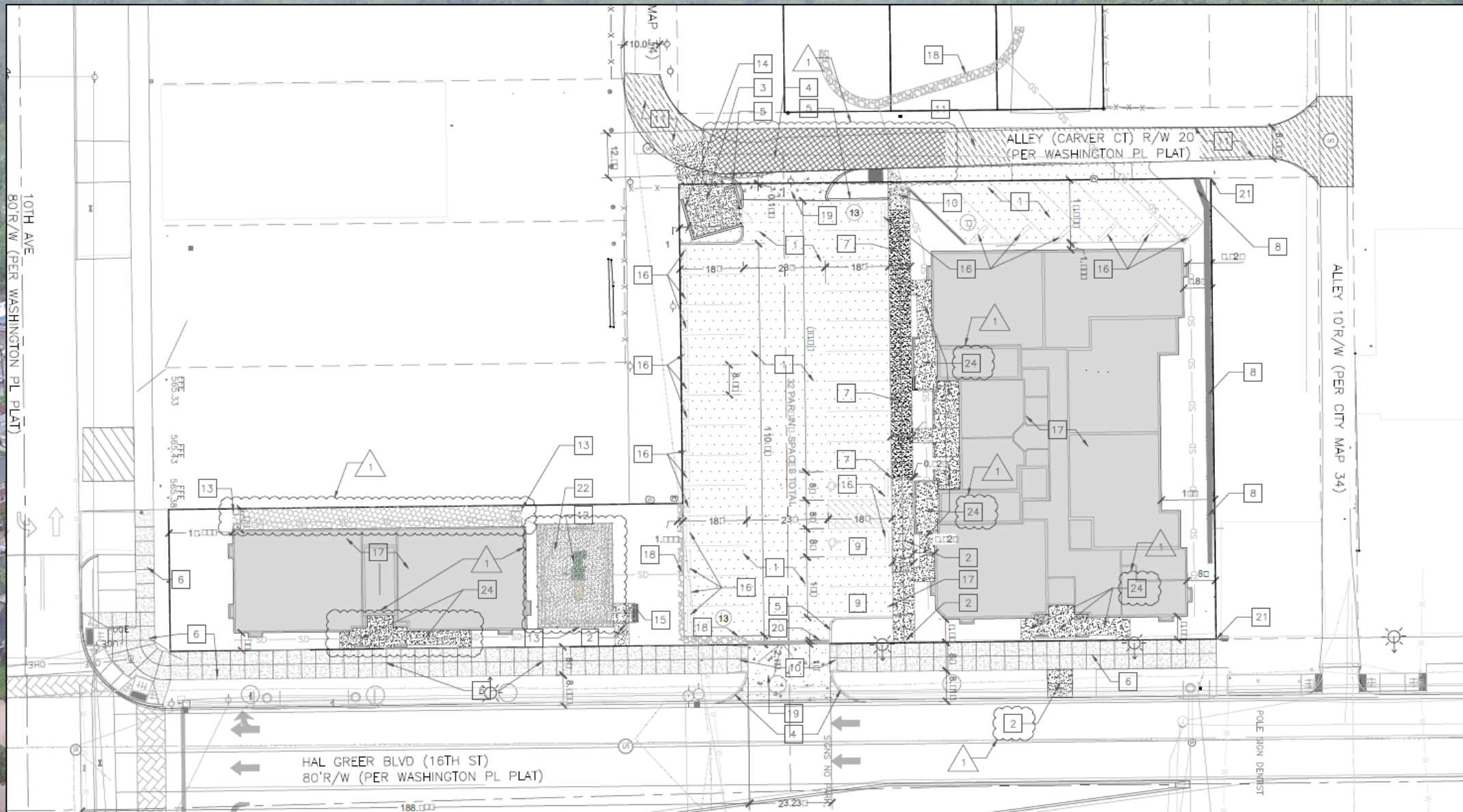


# Zoning Ordinance

- Use districts (residential, commercial, and industrial)
  - Use specific regulations
- Minimum lots, size, and setbacks
- Building height
- Façade materials
- Parking and loading areas, and bicycle parking
- Landscaping and signage



# Barnett Commons – Multi-Family Senior Housing Development





# WV State Code Chapter 8A

- Planning Commission (*Article 2*)
- Comprehensive plan (*Article 3*)
- Subdivision and Land Development Ordinance (*Article 4*)
- Zoning Ordinance (*Article 7*)
- Board of Zoning Appeals (*Article 8*)

WV State Code Chapter 8A: <https://www.wvlegislature.gov/wvcode/code.cfm?chap=8A&art=1#01>

# WV Flood Symposium

hosted by Pew Charitable Research

## 6 Steps to a More Flood-Resilient West Virginia

1. Build capacity at the state and local levels
2. Improve coordination across state government
3. Implement flood-ready infrastructure
4. Promote nature-based solution
5. Buy out properties in flood-prone areas
6. Identify sustainable funding sources to implement the plan

# Types of Nature-Based Solutions

- Land Conservation
- Permeable Pavement
- Greenways
- Wetland Restoration and Protection
- Stormwater Parks
- Rain Gardens
- Green Roofs
- Rainwater Harvesting

- Tree Canopy
- Tree Trenches
- Green Streets
- Waterfront Parks
- Bike Trails
- Fire Management
- Habitat Management
- Setback Levee
- Urban Greenspace

# Senate Bill 677

## West Virginia Disaster Recovery Trust Fund & the State Resiliency Office

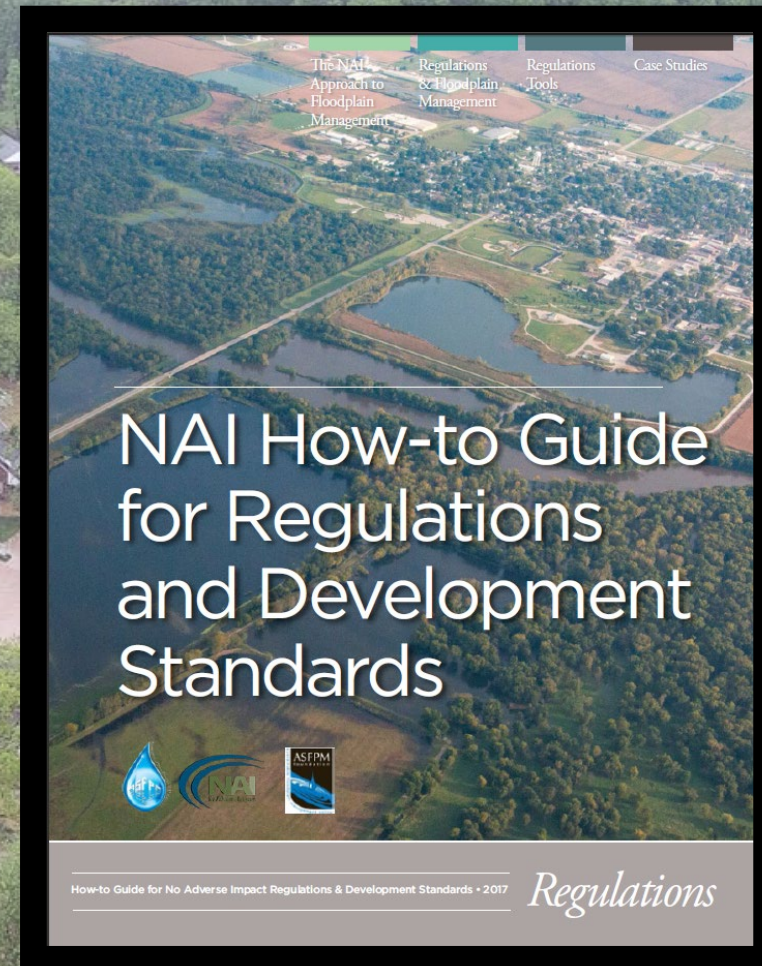
- Clarifies roles and responsibilities of State Resiliency Officer
  - Create a new flood resiliency plan, which will then be updated biannually
- Allows for disbursement of disaster recovery assistance
  - Percentage must benefit low-income communities
  - Percentage expended to implement nature-based- solutions
  - Grants for flood resiliency plan implementation and flood prevention and protection studies

State Resiliency Office: <https://sro.wv.gov/Pages/default.aspx>

# No Adverse Impact (NAI)

## Advantages of the NAI Approach:

- Local empowerment
- More effective programs and projects
- Lower long-term costs
- Improved partnerships
- Reduced liability
- Meet community needs
- Greener floodplain
- CRS credits



# American Planning Association


West Virginia State Chapter



American Planning Association: <https://planning.org/>  
APA WV Chapter: <https://wv.planning.org/>

## What the Chapter offers:

- Chapter only membership
  - Committee opportunities
    - Professional Development
    - Legislative
    - Membership
- Regional Meet Ups
- Legislative Changes and Advocacy
- Creation of Citizen Planner courses
- Networking and Collaboration

An aerial photograph showing a residential neighborhood in Huntington, West Virginia, that has been severely flooded. The water is a muddy brown color and has inundated many houses, yards, and streets. In the background, a multi-lane road curves through the area, and a large building with a sign that says "WARRIOR TALK" is visible. The surrounding hills are covered in dense green trees.

Thank you!  
Any questions??

Patricia Usher

*Associate Planner / Floodplain Administrator*

City of Huntington, WV

[usherp@huntingtonwv.gov](mailto:usherp@huntingtonwv.gov)

304.696.5540, ext. 2094

# References

Bowen, Cynthia. "What is Planning?" *American Planning Association*.  
<https://planning.org/educators/whatisplanning/>

"Chapter 8A." West Virginia Legislature.  
<https://www.wvlegislature.gov/wvcode/code.cfm?chap=8A&art=1#01>

DeAngelis J., et al. "Building Resilience through Plan Integration" *American Planning Association*. 2021. [https://planning-org-uploaded-media.s3.amazonaws.com/publication/download\\_pdf/PAS-MEMO-2021-01-02.pdf](https://planning-org-uploaded-media.s3.amazonaws.com/publication/download_pdf/PAS-MEMO-2021-01-02.pdf)

"NAI How-to Guide for Regulations and Development Standards." *Association of State Floodplain Managers*. 2017. [https://asfpm-library.s3-us-west-2.amazonaws.com/FSC/NAI/ASFPM\\_NAI\\_Regulations\\_2020\\_version\\_2017\\_updated.pdf](https://asfpm-library.s3-us-west-2.amazonaws.com/FSC/NAI/ASFPM_NAI_Regulations_2020_version_2017_updated.pdf)

"Nature-Based Solutions." *FEMA*, May 8, 2023. <https://www.fema.gov/emergency-managers/risk-management/nature-based-solutions>

Sanders M. 6 Steps to a More Flood-Resilient West Virginia. *Pew*, November 30, 2022.  
<https://www.pewtrusts.org/en/research-and-analysis/articles/2022/11/30/6-steps-to-a-more-flood-resilient-west-virginia>

Senate Bill 677. *LegiScan*. <https://legiscan.com/WV/text/SB677/2023>