

Annex 3 - Communications

A. GENERAL

1. Communications serve as the link between governments at all levels and the fixed nuclear facility.
2. The State of West Virginia has several different communications links that can be established. The telephone will serve as the primary link in all cases. The decision to use an alternate means of communications will be made as the situation warrants.
3. The Emergency Communications Center for the State is located in the SEOC. The SEOC will be activated and staffed for 24-hour coverage according to West Virginia Emergency Operations Plan.

B. WVDHSEM/HCDHSEM

1. The commercial telephone, BVPS GEC (Gold Executive Conference Phone), and the RACES (Radio Amateur Civil Emergency Services) net will be the three main communication links used between the State and Hancock County. The BVPS GEC is a telephone link between the state, county and facility.
2. The West Virginia Department of Transportation radio net may be used as the backup radio net until the RACES net is established.
2. The National Warning System (NAWAS) is a dedicated telephone line that links the SEOC with the HCDHSEM. The system may be used as a backup means of communication.
4. The West Virginia State Police radio net links the SEOC with Hancock County and will serve as a backup system.
5. If needed, additional radio nets can be established between the SEOC and the HCDHSEM. (See Annex C - Communications - WVEOP)

C. WVDHSEM/BVPS

1. The commercial telephone (including fax), the BVPS INC and the BVPS GEC are the primary communications systems between the WVDHSEM and the facility.
2. An alternate method would be a relay through the HCDHSEM. Hancock County has a BVPS radio and can communicate messages to and from the facility.

D. WVDHSEM/PEMA/OEMA/FEMA

The commercial telephone and the BVPS GEC will be the primary method of communication.

E. ADDITIONAL COMMUNICATION SYSTEMS

1. Federal National Radio System (FNARS)
2. Satellite Telephone at DHSEM
3. National Warning System (NAWAS)
4. National Guard Liaison Officers (LNOs), if dispatched, may provide satellite telephone capability to the counties of the northern panhandle.

F. WVDHSEM/OTHER FEDERAL AGENCIES

Other federal agencies will establish their own communications network as needed.

G. FIELD MONITORING TEAM

1. State Field Monitoring Teams (FMT) will respond to the HCEOC and be dispatched from there for field monitoring.
2. Radio and telephone communications will be established between the field monitoring teams and the HCEOC. The HCEOC will relay information from the field monitoring teams to the WV SEOC.

NOTE: The monitoring team leader will remain in the HCDHSEM to receive and relay the information.

3. The Hancock County Sheriff's Department Radio Net or the Department of Transportation (DOT) radio net can be established as the primary net. Sufficient DOT mobile radios can be obtained from the Hancock County

Garage, the Wheeling Tunnel Office and the central office in Charleston. The DOT net will be established in accordance with Annex C (Communications) of the WVEOP.

H. FIELD TEAM CENTER

Communications for the Field Team Center (FTC) will be through the WVDHSEM Communications Vehicle. The vehicle is self-contained with programmable radios installed. Other communications equipment available includes telephone, internet, fax, and satellite phone.

I. FIELD SAMPLING TEAM

The Field Sampling Teams (FST) will verify communications with the FTC. If available, state vehicles with communications capabilities will be used. In the event private vehicles or state vehicles without communications capabilities need to be used, the FTC has mobile radios available.

J. ATTACHMENTS

Attachment A – WV DHSEM and HCDHSEM

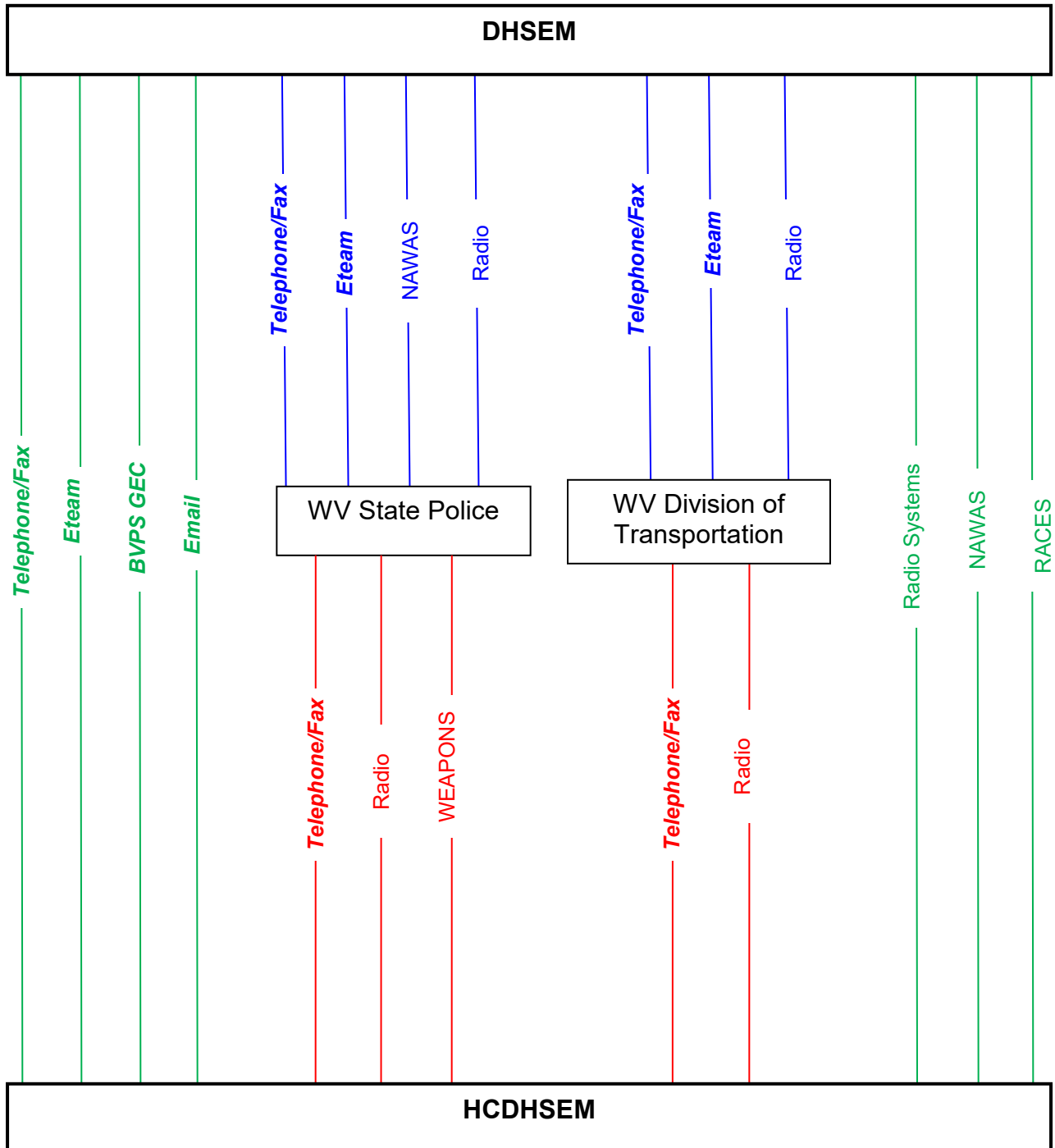
Attachment B – WV DHSEM and BVPS

Attachment C – WV DHSEM and PEMA/OEMA/FEMA

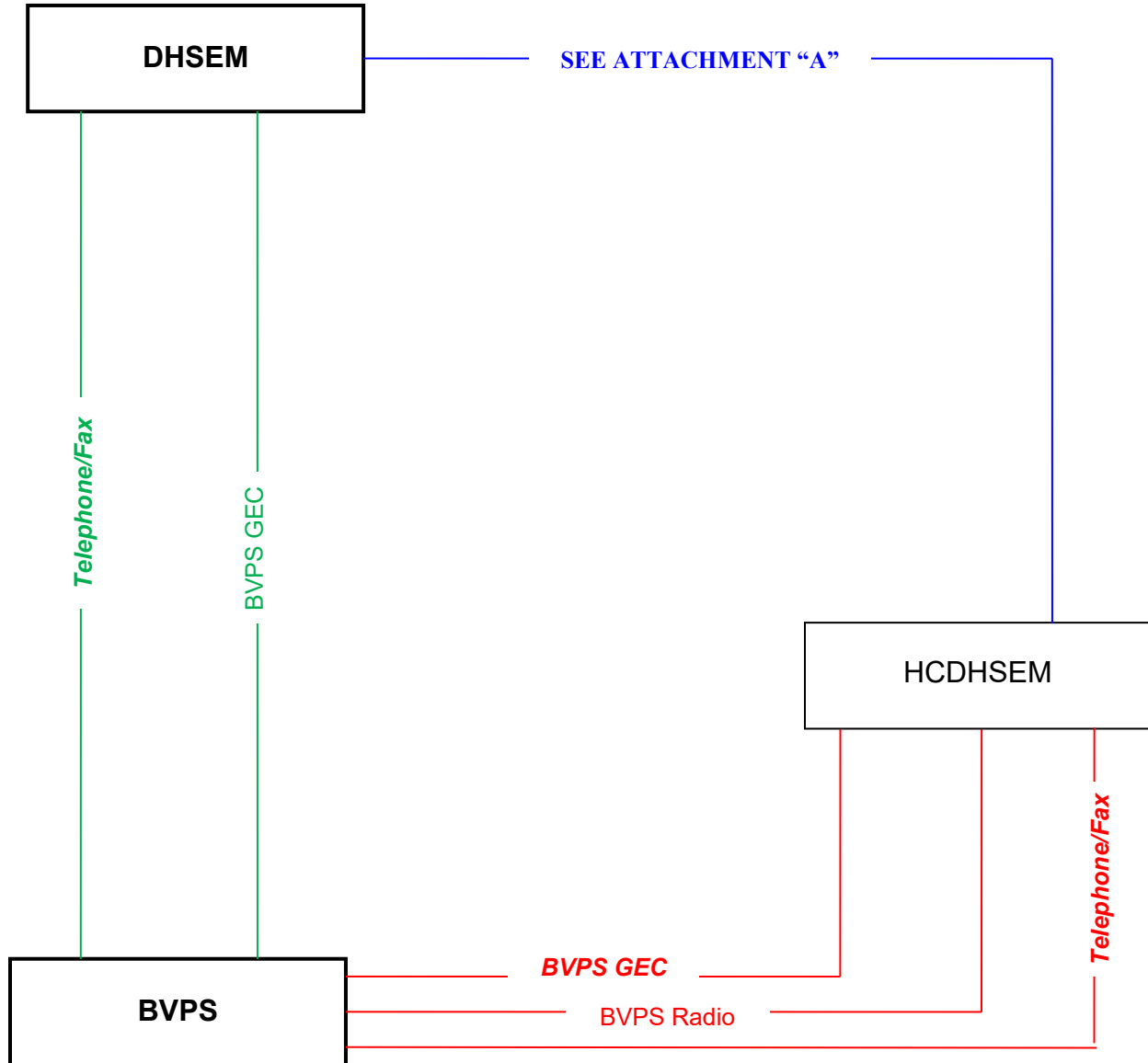
Attachment D – WV SEOC and Field Monitoring Teams

Attachment E – WV SEOC, Field Team Center, and Field Sampling Teams

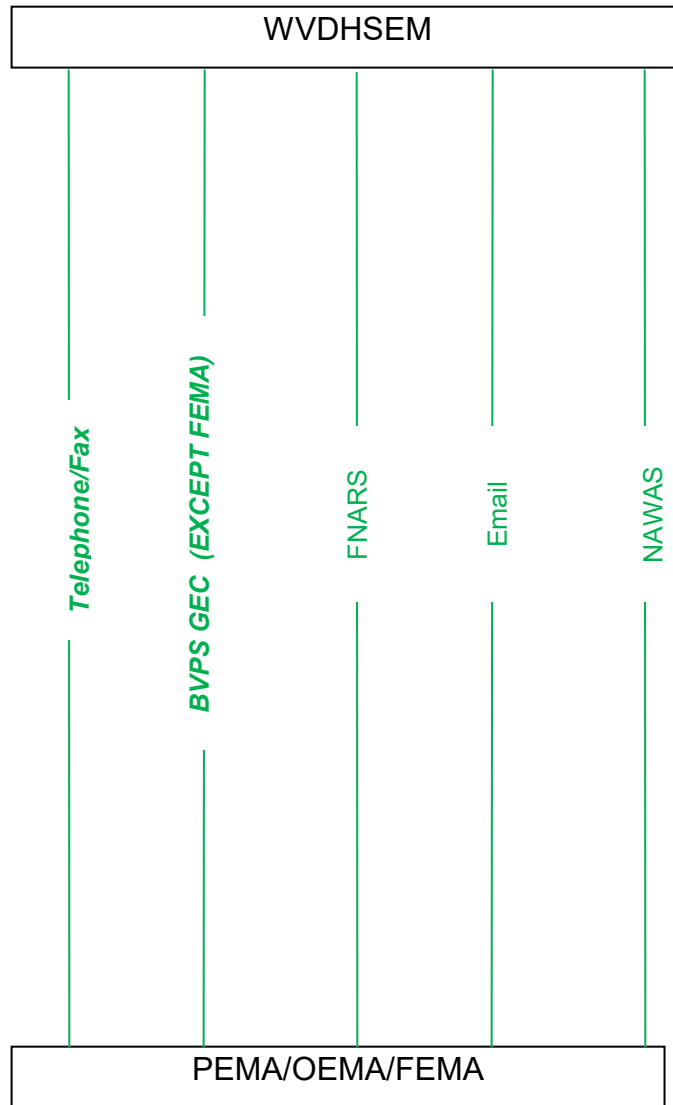
ANNEX 3 - ATTACHMENT A



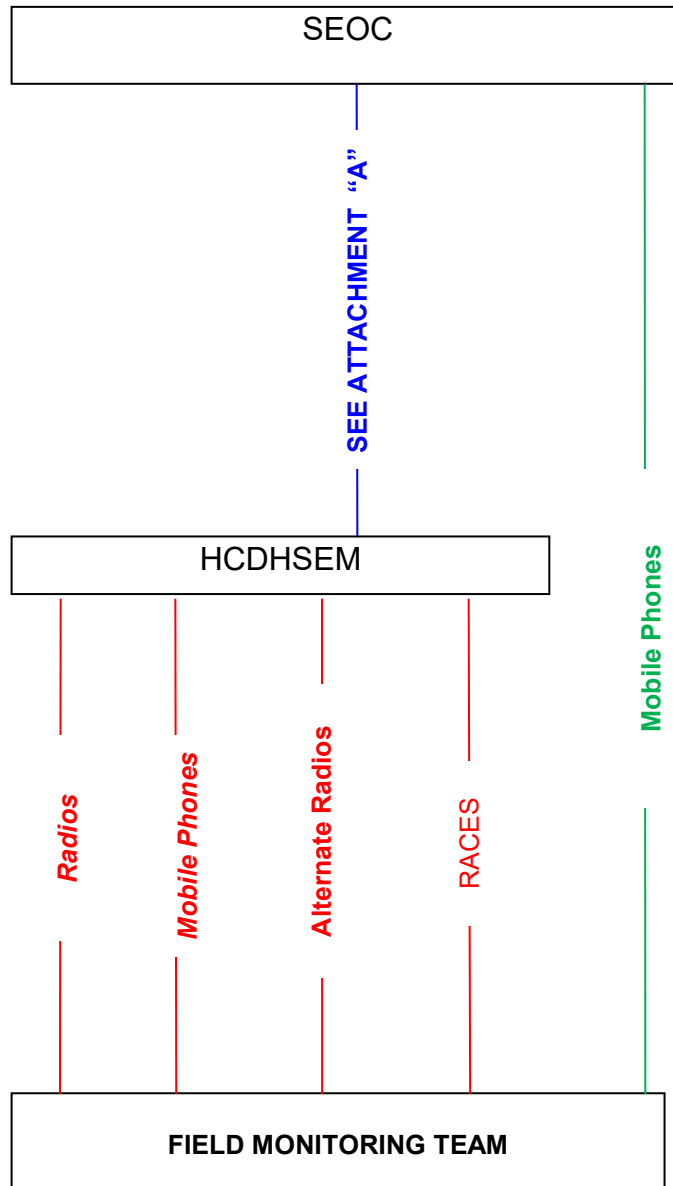
ANNEX 3 - ATTACHMENT B



ANNEX 3 - ATTACHMENT C



ANNEX 3 - ATTACHMENT D



ANNEX 3 - ATTACHMENT E

