

## Annex 1 - Notification

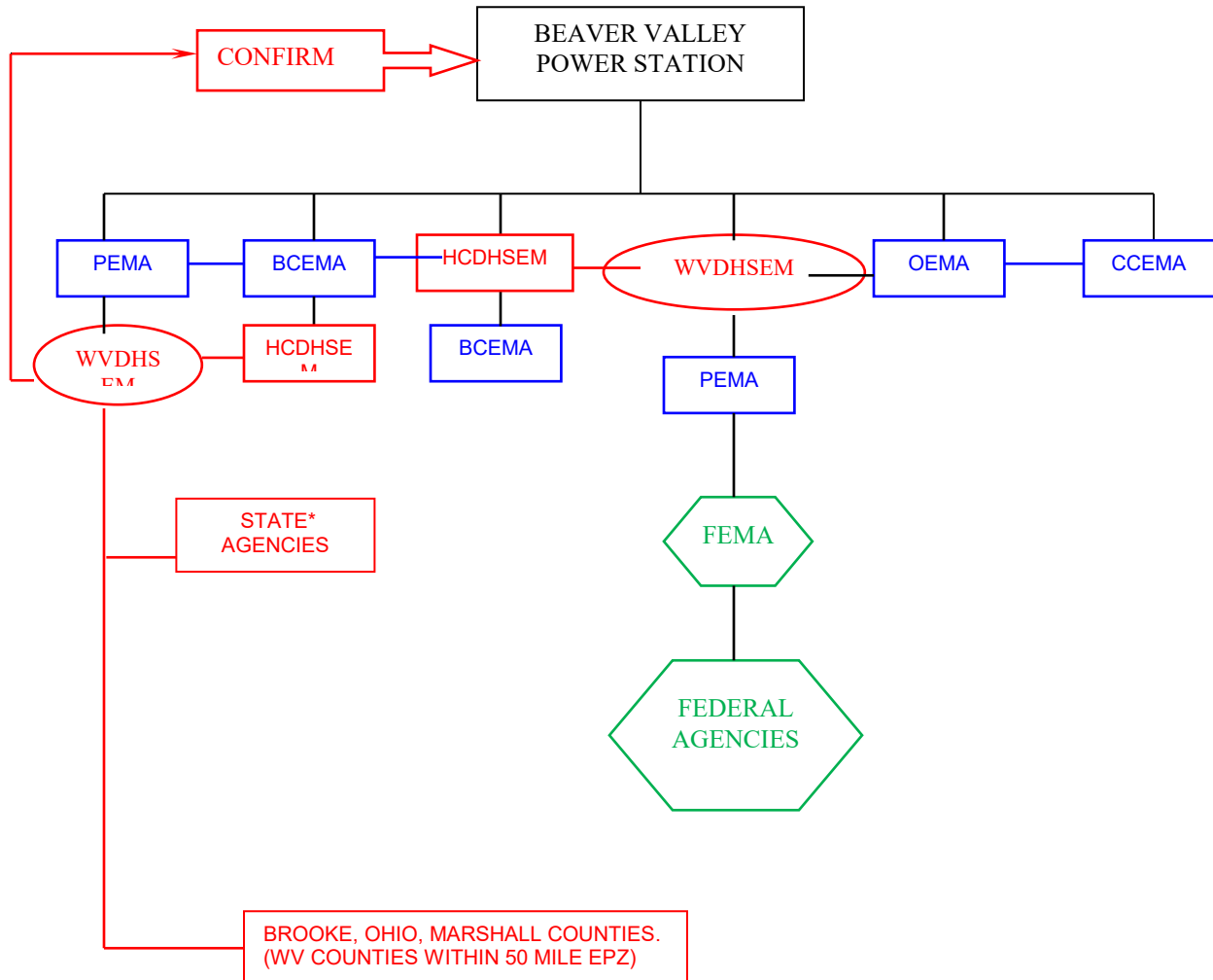
- A. The State of West Virginia will be notified of an incident through the West Virginia Division of Homeland Security and Emergency Management (WV DHSEM). WV DHSEM can be reached through its telephone number (304-558-5380) which is answered seven days a week, 24-hours a day. Alternate notifications are through the WV State Police Communications Center or the Hancock County 24-Hour Warning Point (the Hancock County 911 Dispatch Center).
- B. In the event of an incident, the Beaver Valley Power Station (BVPS) will activate the "Initial Notification Conference" call.
1. The conference call dials the 24 hour warning points for Pennsylvania; Beaver County, PA; Ohio; Columbiana County, OH; West Virginia and Hancock County, WV.
  2. The six warning points are automatically put into the conference call.
  3. The BVPS "Initial Notification Form" is faxed to all locations.
  4. BVPS confirms contact with the agencies and ensures they have the FAX.
  5. If an agency does not have the FAX, BVPS will read the information to the agency.
  6. If WVDHSEM is not on the initial notification conference, Hancock County will notify DHSEM or vice versa.
  7. WVDHSEM notification to Hancock County will be done by established WVDHSEM procedures.
- C. WVDHSEM will notify state agencies, as needed, to respond to an event at the BVPS.
- D. Any county in WV can be notified through its county 24-Hour Warning Point. The Warning Point will relay any information to the proper emergency services personnel.
- E. In the event of an incident at the fixed nuclear facilities there are defined notification procedures that will be followed.

The fixed nuclear facility will notify:

- Beaver County, PA
- Pennsylvania Emergency Management Agency (PEMA)

- Hancock County, WV
  - WV DHSEM
  - Columbiana County, OH
  - Ohio Emergency Management Agency (OEMA)
- F. Beaver County will notify Hancock County to ensure that the information was sent to them.
- G. PEMA will notify the State of West Virginia by contacting DHSEM.
- H. HCDHSEM will contact WV DHSEM to confirm notification.
- I. When receiving notification of an emergency from other offsite response agencies, but not BVPS, the State of West Virginia will confirm the incident with the fixed nuclear facility via telephone.
- J. The WVDHSEM will notify selected state agencies and the WV counties (Brooke, Ohio, and Marshall) within the 50-mile Emergency Planning Zone (EPZ).
- K. These notification procedures are designed so that there is an overlapping of information to ensure the key contacts are informed of the incident. (See the block diagram, Annex 1, Page 1-3, Notification Procedures for Fixed Nuclear Facility.)

## NOTIFICATION FLOW FOR BEAVER VALLEY POWER STATION



\* POSSIBLE STATE AGENCIES – Governor’s Office, National Guard, Agriculture, Highways, State Police, Department of Natural Resources, American Red Cross, WVU Extension Service, Department of Environmental Protection, and Department of Health and Human Resources.

## ATTACHMENT 1-1

**Beaver Valley Emergency Response System  
BVERS (an automatic phone system)****INITIAL NOTIFICATION INSTRUCTIONS**

If the Beaver Valley Power Station has declared an Emergency Action Level or is performing a drill, you will: **Receive a call , directing you to enter the PASS Code to enter the conference.**

**When requested, enter the PASS Code. You will then be connected to the conference call.**

**ID Code; 1**

The Initial Notification Form is FAXed to the WVDHSEM office.

If you do not receive the FAX, information will be provided over the telephone.

**NOTE:**

**Primary Alternate Method: Calls by BVPS to the individual organizations.**

**Secondary Alternate Method: Radio Communications to the County 24-hour contact point**

Attachment 2 - SAMPLE "INITIAL NOTIFICATION FORM"

**FENOC NUCLEAR POWER PLANT INITIAL NOTIFICATION FORM**  
**Beaver Valley**  
 1/2-EPP-IP-1.1.F01 Rev. 5

**USE FOR:**  
 • INITIAL CLASSIFICATIONS,  
 • CHANGES IN CLASSIFICATIONS,  
 • CHANGES IN PROTECTIVE ACTION RECOMMENDATIONS,  
 • EVENT TERMINATION

STATE / COUNTY USE ONLY

DATE: \_\_\_\_\_ TIME: \_\_\_\_\_

MESSAGE NO: \_\_\_\_\_

1. This is the:  Beaver Valley Power Station Unit 1 Reactor Power Level \_\_\_\_\_ %  
 Beaver Valley Power Station Unit 2 Reactor Power Level \_\_\_\_\_ % Code Word **OSCAR**

2. This is:  An Actual Emergency  A Drill

3.  a. A(n)  GENERAL EMERGENCY  SITE AREA EMERGENCY  ALERT  UNUSUAL EVENT  
 was declared at: \_\_\_\_\_ on \_\_\_\_\_ based on EAL(a): \_\_\_\_\_,  
 (TIME) (DATE)

b. The Emergency situation has been terminated at: \_\_\_\_\_ on \_\_\_\_\_  
 (TIME) (DATE)

c. The Protective Action Recommendation is being changed at: \_\_\_\_\_ on \_\_\_\_\_  
 (TIME) (DATE)

4. Brief non-technical description of event: \_\_\_\_\_

---

5. The radiological conditions are:  
 a. A non-routine release of radioactive material, as a result of this event, is in progress.  
 The release is:  Airborne  Liquid  
 b. The release of radioactive material associated with this event has been terminated.  
 c. NO Radiological Release is in progress as a result of this event.

6. Utility Protective Action Recommendations (PAR's):  
 a. Evacuation:  
 N/A  2 Miles - 360°  5 Miles - 360°  10 Miles - 360°  
 AND Evacuate Downwind Wedge  
 N/A  5 Miles (check applicable sectors)  10 Miles (check applicable sectors)  
 A  B  C  D  E  F  G  H  
 J  K  L  M  N  P  Q  R  
 AND that potassium iodide (KI) be administered to the general public in accordance with State procedures. The general public in unaffected areas should be advised to go indoors and monitor EAS broadcasts.

b. Sheltering:  
 N/A  Remainder of 10 Mile EPZ  10 Mile EPZ  0-2 Miles 360° and 5 Mile Downwind Wedge  
 (check applicable sectors)  
 A  B  C  D  E  F  G  H  
 J  K  L  M  N  P  Q  R  
 AND that potassium iodide (KI) be administered to the general public in accordance with State procedures. The general public in unaffected areas should be advised to go indoors and monitor EAS broadcasts.

c. None

7. Wind Direction is FROM: \_\_\_\_\_ degrees at 150' Wind Speed is: \_\_\_\_\_ mph at 35'  
 Callback number is 724-843-8000

For Utility Use Only

PELR Check: \_\_\_\_\_ Approved: \_\_\_\_\_